



Modular & Portable Buildings

High quality coatings for the manufacture and refurbishment of modular and portable units...

PRIMERS



PrimeTec MX is a single component, high solids, high performance water based anti-corrosive primer. It has been specifically designed to provide very fast drying speeds, excellent anti-corrosive properties and flash rust resistance. Due to its smooth finish and superior adhesion when applied directly to clean steel, aluminium and galvanised substrate, PrimeTec MX is the ideal primer for a range of applications.

PrimeTec Epox-602 is a one-component water based epoxy primer with outstanding anti-corrosive performance at low paint thickness builds. PrimeTec Epox-602 is very fast drying and can be over-coated with both one and two-component topcoats.

TOPCOATS

ShieldTec Ultra 6008 provides extremely fast drying and a hard, tack free, durable, chip resistant finish. ShieldTec Ultra 6008 delivers superior adhesion to virtually all previously coated surfaces and to bare steel. ShieldTec Ultra 6008 provides superior anti-corrosive performance and flash rust resistance and is the ideal choice for external applications, due to its excellent dirt resistance, UV resistance and early water resistance. ShieldTec Ultra 6008 provides excellent opacity in one coat and can be painted over rust with no bleed through or discolouration.

Our **ShieldTec PU-200** two pack water-borne polyurethane topcoat provides an extremely durable, scratch resistant finish which offers excellent exterior UV resistance along with superior solvent & chemical resistance properties. ShieldTec PU-200 can easily be applied by airless or air assisted airless spray application.



Our **ShieldTec PS** range is a water based coating for overcoating plastisol coated steel. ShieldTec PS has excellent adhesion and excellent outdoor weathering properties. The range includes, ShieldTec PS-6450 which is easy to apply by brush and roller and ShieldTec PS-6451 which is recommend for airless or air assisted airless spray application.



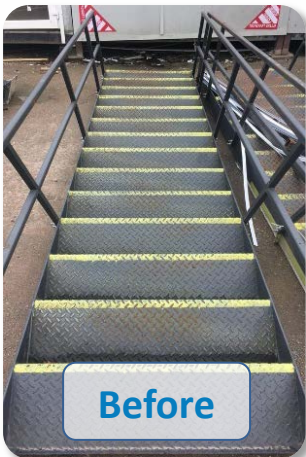
Modular & Portable Buildings

High quality coatings for the manufacture and refurbishment of modular and portable units...

DIRECT TO METAL COATINGS

ShieldTec Ultra 6010 is a high performance water based direct to metal coating, which is quick drying, has excellent adhesion and a hardwearing finish that is chip and scratch resistant.

When applied as a direct to metal coating, ShieldTec Ultra 6010 provides outstanding corrosion resistance and long term outdoor weathering properties. ShieldTec Ultra 6010 can also be used as a topcoat with our range of water based primers to extended term corrosion performance. ShieldTec Ultra 6010 is easy to apply and due to its high solids and excellent opacity, the coverage rates obtained are much higher than most competitive paint systems.



Before



After

ShieldTec Epox-600 is a unique water based one pack epoxy gloss coating that can be applied direct to metal and over rust making it ideal for refurbishment for metal applications. ShieldTec Epox-600 provides superior adhesion with an extremely tough and hardwearing decorative finish. This fast drying finish provides good anti-corrosive properties and is easy to apply by spray, brush or roller.

At AquaTec Coatings, we offer high quality water based coatings at competitive prices. Our dedicated technical support and sales team is always on hand to provide excellent customer service.

For any further information on our range of water based systems and our additional services, contact us via telephone or email.

Web: www.aquatecpaint.co.uk **Telephone:** (01978) 661 711 **Email:** sales@aquatecpaint.co.uk